



algarve



sortami



## Sortami – Experiência Reconhecida!

Vivemos tempos de mudança em que os desafios que enfrentamos exigem competência, profissionalismo e uma dedicação total.

A **Sortami – Mediação Imobiliária, Lda**

opera no Sector Imobiliário há mais de 20 anos.

A experiência adquirida durante este tempo permite-nos ter um conhecimento profundo e global do sector.

A satisfação dos nossos Clientes é um compromisso assumido por toda a Equipa de Profissionais da nossa empresa.

Através de um contacto directo e pessoal trabalhamos com o objectivo de encontrar as melhores soluções ajustadas ao desejo dos nossos Clientes e à realidade do mercado.

**QUER COMPRAR OU VENDER UM IMÓVEL?  
NÃO HESITE EM CONTACTAR-NOS!**

## Sortami – Recognized Experience!

*We are living in a period of changes and the challenges that we all face demand competence, professionalism and total dedication.*

*Sortami – Mediação Imobiliária, Lda operates in the Real Estate Sector for more than 20 years.*

*The acquired and continuous experience during this time underlines our deep and global knowledge of the property market.*

*The satisfaction of our Clients is a commitment of our Team of Professionals. Through a personal and direct contact we work to achieve the best solutions adjusted to the needs of our Clients and to the market reality.*

**DO YOU WANT TO BUY OR SELL PROPERTY?  
PLEASE CONTACT US!**



Área de lote  
Plot area



Área de construção  
Construction area



Quartos  
Bedrooms



Casas de banho  
W.C.



Preço  
Price

# VILAMOURA

Apartamento | Apartment



112,03 m<sup>2</sup>  
127,13 m<sup>2</sup>  
200,7 m<sup>2</sup>



1  
2  
3



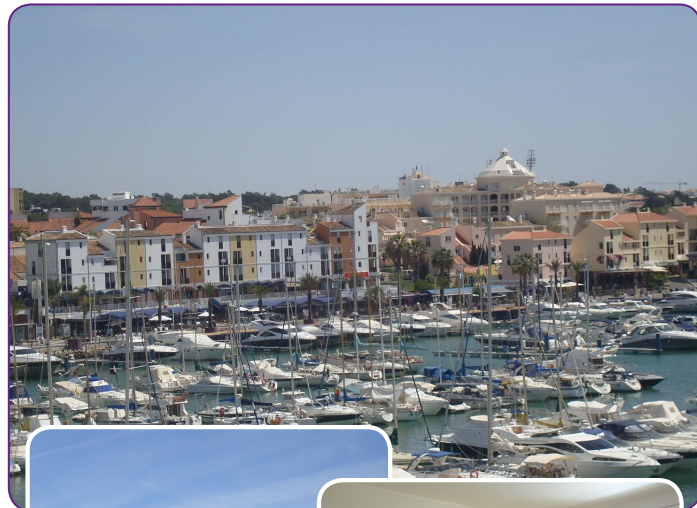
2  
3  
3



270.000,00 €  
480.000,00 €  
495.000,00 €

Apartamento | Apartment

# VILAMOURA



141,80 m<sup>2</sup>  
240 m<sup>2</sup>  
304 m<sup>2</sup>



1  
2  
3



1  
2  
2



375.000,00 €  
550.000,00 €  
750.000,00 €

# VILAMOURA

Apartamento | Apartment



95 m<sup>2</sup>



2



1



130.000,00 €

# VILAMOURA

Apartamento | Apartment



114 m<sup>2</sup>



2



2



117.000,00 €

# VILAMOURA

Apartamento | Apartment



71,2 m<sup>2</sup>



2



2



120.000,00 €

# VILAMOURA

Apartamento | Apartment



65 m<sup>2</sup>



1



1



80.000,00 €

# VILAMOURA

Apartamento | Apartment



130 m2



2



2



140.000,00 €

# VILAMOURA

Apartamento | Apartment



118 m2



2



2



170.000,00 €

# VILAMOURA

Apartamento | Apartment



92 m2



2



1



190.000,00 €

Apartamento | Apartment

# VILAMOURA



120 m2



2



2



150.000,00 €

# VILAMOURA

Apartamento | Apartment



156 m2  
266 m2



2  
2



3  
2



250.000,00 €  
330.000,00 €

# VILAMOURA

Apartamento | Apartment



87,5 m2  
116,4 m2



1  
2



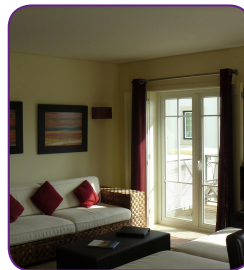
1  
2



220.000,00 €  
310.000,00 €

Apartamento | Apartment

# VILAMOURA



100 m2



1



1



440.000,00 €

Apartamento | Apartment

# VILAMOURA



Até 100%  
Empréstimo



93 m2  
107 m2



1  
2



2  
2



201.000,00 €  
236.000,00 €

# VILAMOURA

Apartamento | Apartment



138,44 m<sup>2</sup>



2



3



190.000,00 €

# VILAMOURA

Apartamento | Apartment



99,02 m<sup>2</sup>  
128,2 m<sup>2</sup>



1  
2



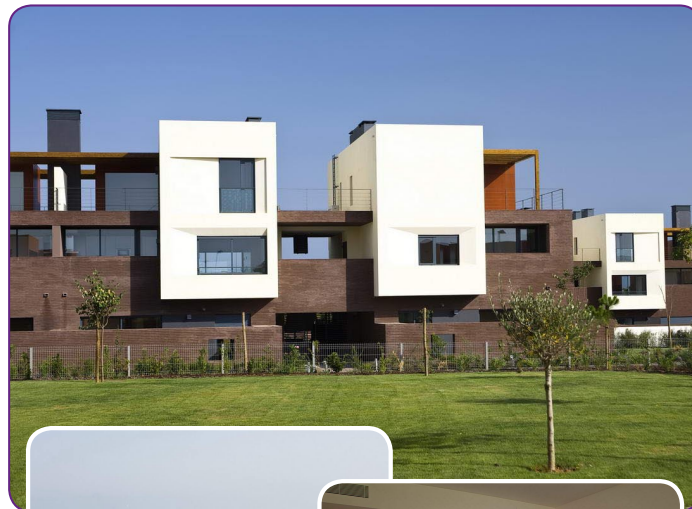
2  
2



150.000,00 €  
190.000,00 €

# VILAMOURA

Apartamento | Apartment



133,93 m<sup>2</sup>  
190,40 m<sup>2</sup>  
200,46 m<sup>2</sup>



1  
2  
3



2  
2  
3



190.000,00 €  
290.000,00 €  
290.000,00 €

# VILAMOURA

Morada | Villa



700 m<sup>2</sup>



220 m<sup>2</sup>



4



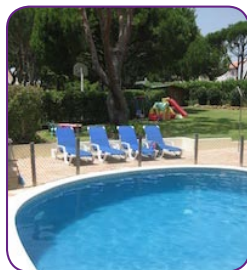
5



499.000,00 €

# VILAMOURA

Morada | Villa



320 m<sup>2</sup>



180 m<sup>2</sup>



3



3



375.000,00 €

Morada em Banda | Townhouse

# VILAMOURA



120 m<sup>2</sup>



3+1



3



250.000,00 €

Morada em Banda | Townhouse

# VILAMOURA



150 m<sup>2</sup>  
244 m<sup>2</sup>



2  
3+1



3  
4



320.000,00 €  
380.000,00 €

# VILAMOURA

Morada | Villa



651 m<sup>2</sup>



284,4 m<sup>2</sup>



3



3



580.000,00 €

# VILAMOURA

Morada em Banda | Townhouse



400 m<sup>2</sup>



225 m<sup>2</sup>



4



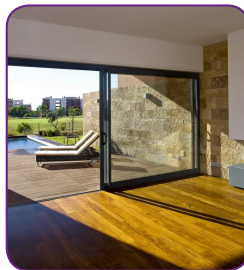
4



480.000,00 €

# VILAMOURA

Morada | Villa



887,12 m<sup>2</sup>



318.65 m<sup>2</sup>



3



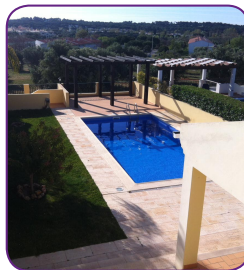
3



685.950,00 €

# VILAMOURA

Morada em Banda | Townhouse



500 m<sup>2</sup>



280 m<sup>2</sup>



4+1



4



499.000,00 €

# VILAMOURA

Morada | Villa



900 m<sup>2</sup>



250 m<sup>2</sup>



4



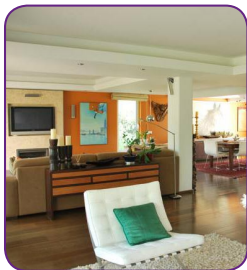
3



1.300.000,00 €

# VILAMOURA

Morada | Villa



600 m<sup>2</sup>



300 m<sup>2</sup>



4



5



980.000,00 €

# VILAMOURA

Morada | Villa



570 m<sup>2</sup>



250 m<sup>2</sup>



4



5



1.280.000,00 €

Morada | Villa

# VILAMOURA



900 m<sup>2</sup>



260 m<sup>2</sup>



4+1



5



1.160.000,00 €

# VILAMOURA

Morada | Villa



1.384 m<sup>2</sup>



556 m<sup>2</sup>



5



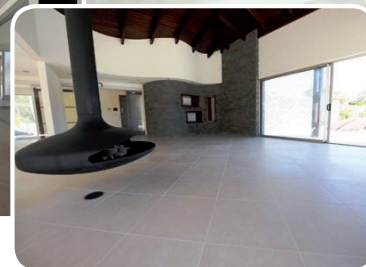
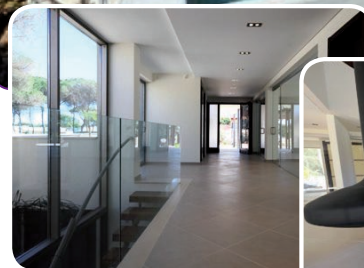
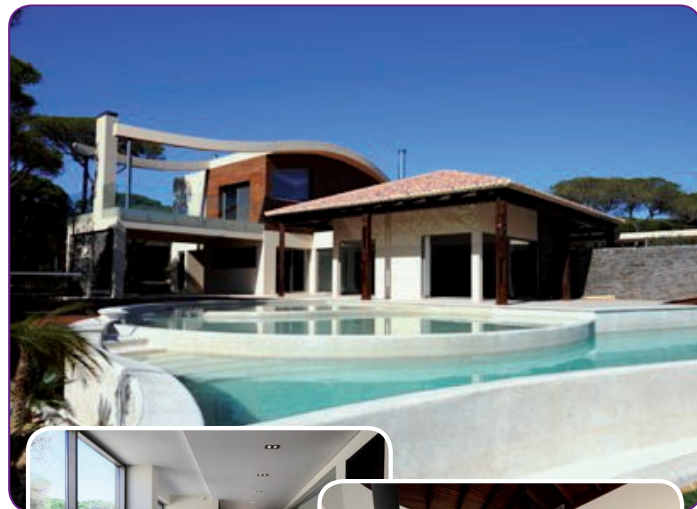
6



1.950.000,00 €

# VILAMOURA

Morada | Villa



3.767 m<sup>2</sup>



677 m<sup>2</sup>



4+1



8



2.500.000,00 €

# VALE DO LOBO

Apartamento | Apartment



156 m2



2



2



725.000,00 €

Morada em Banda | Townhouse

# VALE DO LOBO



220 m2



3



3



550.000,00 €

Morada em Banda | Townhouse

# VALE GARRÃO



412 m2



141 m2



2



3



390.000,00 €

## VALE DO LOBO

Morada | Villa



900 m<sup>2</sup>



400 m<sup>2</sup>



4+1



5



750.000,00 €

## VALE DO LOBO

Morada | Villa



1.050 m<sup>2</sup>



250 m<sup>2</sup>



4



2



1.200.000,00 €

Morada | Villa

## VALE DO LOBO



863 m<sup>2</sup>



582 m<sup>2</sup>



4



5



1.950.000,00 €

## QUINTA DO LAGO

Apartamento | Apartment



224 m2



2



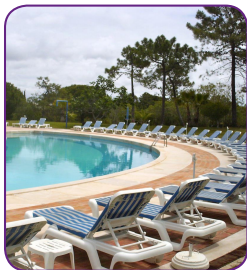
3



350.000,00 €

## QUINTA DO LAGO

Apartamento | Apartment



134 m2



2



2



248.000,00 €

Morada em Banda | Townhouse

## QUINTA DO LAGO



212 m2



4



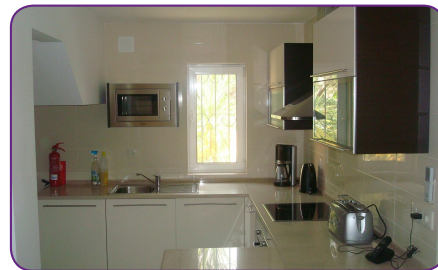
4



850.000,00 €

Morada em Banda | Townhouse

## QUINTA DO LAGO



110 m2



2



2



450.000,00 €

# QUINTA DO LAGO

Morada | Villa



850 m<sup>2</sup>



470 m<sup>2</sup>



4



5



1.450.000,00 €

# QUINTA DO LAGO

Morada | Villa



800 m<sup>2</sup>



389 m<sup>2</sup>



4



5



950.000,00 €

## QUARTEIRA

Apartamento | Apartment



79 m<sup>2</sup>



2



1



90.000,00 €

## QUARTEIRA

Apartamento | Apartment



100 m<sup>2</sup>



2



1



128.000,00 €

Apartamento | Apartment

## QUARTEIRA



66 m<sup>2</sup>  
105 m<sup>2</sup>  
125 m<sup>2</sup>



1  
2  
3



1  
2  
2



105.000,00 €  
140.000,00 €  
155.000,00 €

# QUARTEIRA

Apartamento | Apartment



130 m2



2



1



190.000,00 €

# QUARTEIRA

Apartamento | Apartment



130 m2



3



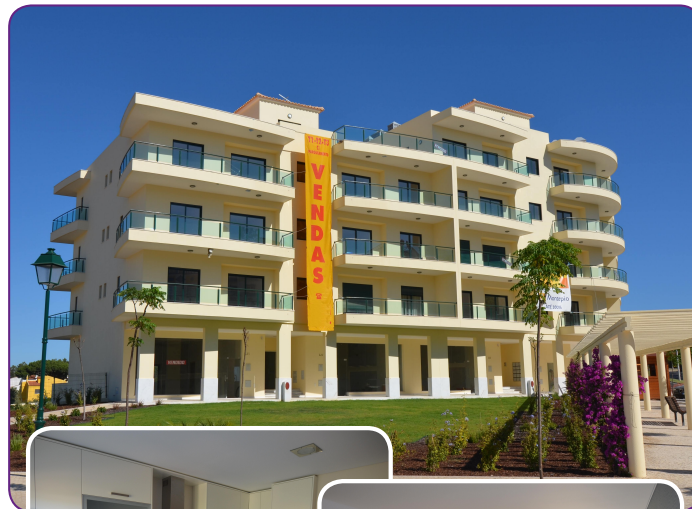
2



179.000,00 €

Apartamento | Apartment

# QUARTEIRA



Até 100%  
Empréstimo



71,15 m2  
95,65 m2  
127,35 m2



1  
2  
3



1  
2  
3



147.000,00 €  
179.000,00 €  
215.000,00 €

## QUARTEIRA

Apartamento | Apartment



85 m2  
107,4 m2



1  
2



1  
2



135.000,00 €  
173.350,00 €

## QUARTEIRA

Apartamento | Apartment



132,71 m2



2



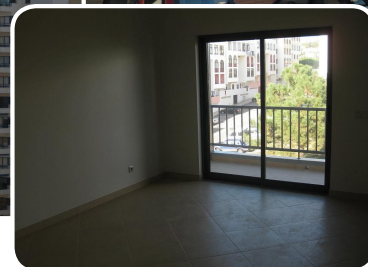
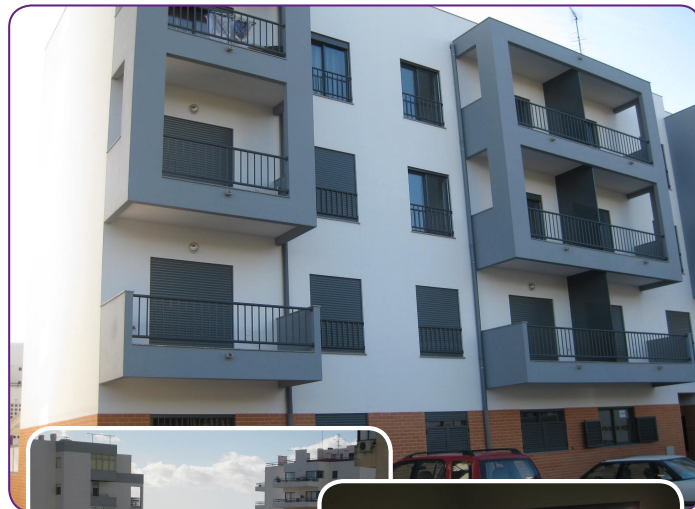
2



155.000,00 €

Apartamento | Apartment

## QUARTEIRA



47,1 m2  
71 m2



1  
2



1  
2



131.500,00 €  
169.750,00 €

## QUARTEIRA

Morada | Villa



600 m<sup>2</sup>



460 m<sup>2</sup>



4+1



3



850.000,00 €

## QUARTEIRA

Morada em Banda | Townhouse



405 m<sup>2</sup>



297 m<sup>2</sup>



4



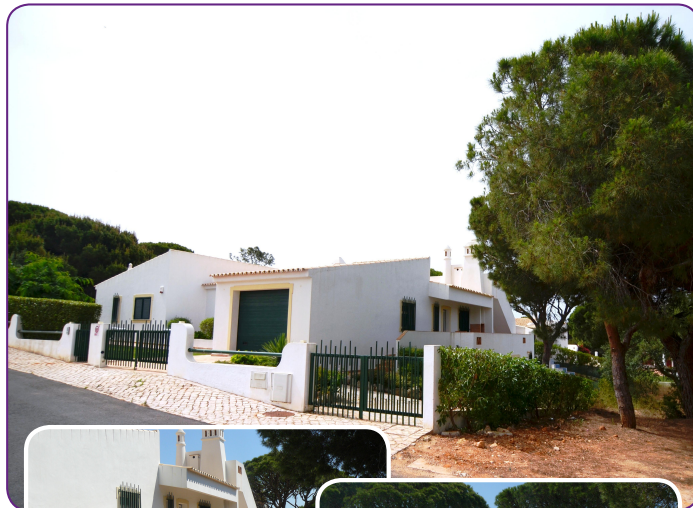
5



360.000,00 €

## QUARTEIRA

Morada | Villa



1.020 m<sup>2</sup>



306 m<sup>2</sup>



4+1



4



590.000,00 €

# VILA SOL

Apartamento | Apartment



95 m2



2



2



220.000,00 €

Apartamento | Apartment

# VILA SOL



187,5 m2  
202,6 m2



1  
2



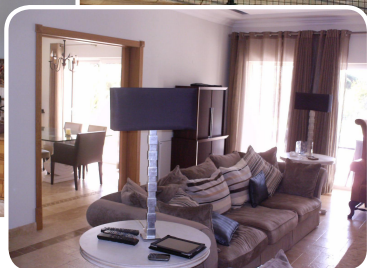
2  
3



175.000,00 €  
215.000,00 €

# VILA SOL

Morada | Villa



1.267 m<sup>2</sup>



400 m<sup>2</sup>



5+1



5+1



1.600.000,00 €

[www.sortami.com](http://www.sortami.com)

# QUARTEIRA

Morada | Villa



3.600 m<sup>2</sup>



370 m<sup>2</sup>



4



5

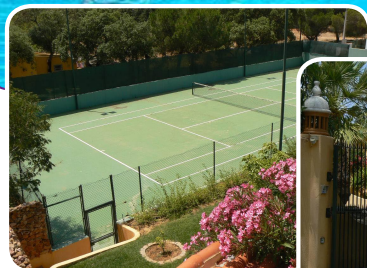


2.000.000,00 €

 sortami | 21

# ALMANCIL

Moradia | Villa



3000 m2



400 m2



6



6



650.000,00 €

Moradia | Villa

# ALMANCIL



970 m2



120 m2



3



3



275.000,00 €



Apartamento | Apartment

# ALMANCIL



Até 100%  
Empréstimo



82,8 m2  
120,6 m2



2  
3



2  
2

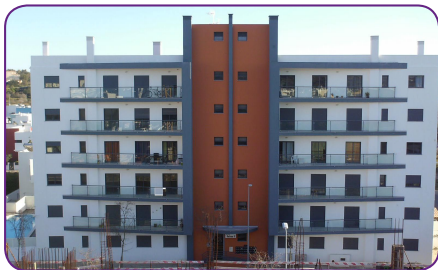


130.000,00 €  
170.000,00 €



# LOULÉ

Apartamento | Apartment



97 m<sup>2</sup>



3



2



152.000,00 €

# LOULÉ

Apartamento | Apartment



114 m<sup>2</sup>



3



2



120.000,00 €

Morada | Villa

# LOULÉ



6.145 m<sup>2</sup>



350 m<sup>2</sup>



5



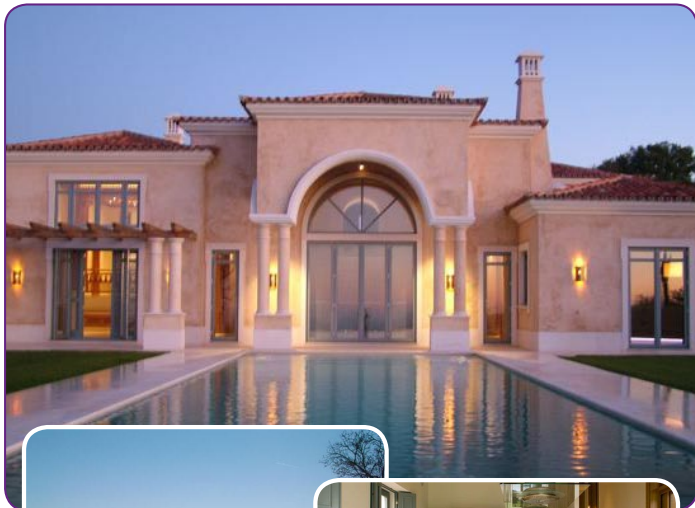
4



395.000,00 €

# LOULÉ

Morada | Villa



5.800 m<sup>2</sup>



586 m<sup>2</sup>  
149 m<sup>2</sup>



4



5



1.750.000,00 €

Morada | Villa

# LOULÉ



3.000 m<sup>2</sup>



364 m<sup>2</sup>



5



5



850.000,00 €



Morada | Villa

# LOULÉ



2.346 m<sup>2</sup>



300 m<sup>2</sup>



3+1



3



850.000,00 €



# BOLIQUEIME

Morada | Villa



1.600 m<sup>2</sup>



462 m<sup>2</sup>



4



5



950.000,00 €

# BOLIQUEIME

Morada | Villa



3.000 m<sup>2</sup>



400 m<sup>2</sup>



5



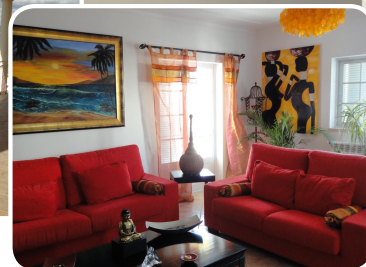
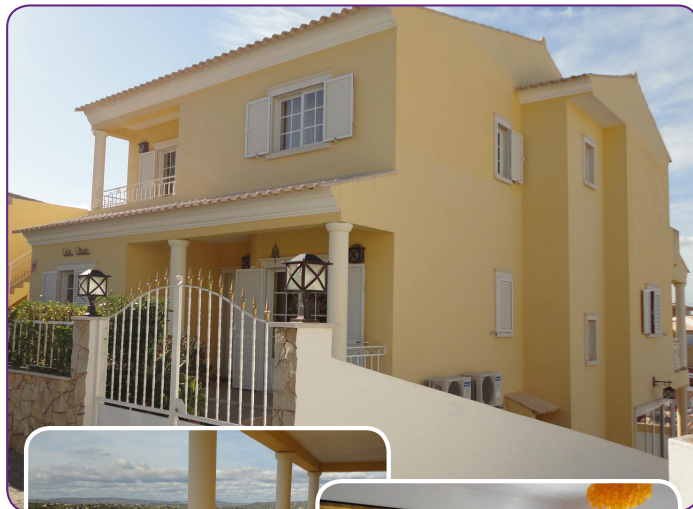
6



1.500.000,00 €

# ALGOZ

Morada | Villa



390 m<sup>2</sup>



308 m<sup>2</sup>



5



4



350.000,00 €

# ALBUFEIRA

Morada em Banda | *Townhouse*



113,83 m<sup>2</sup>



2



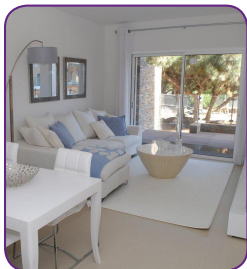
2



211.500,00 €

# ALBUFEIRA

Apartamento | *Apartment*



110 m<sup>2</sup>



2



2



328.500,00 €

Morada em Banda | *Townhouse*

# ALBUFEIRA



194,83 m<sup>2</sup>



2+1



3



395.000,00 €

Apartamento | *Apartment*

# ALBUFEIRA



85 m<sup>2</sup>



2



2



155.000,00 €

## ALBUFEIRA

Morada | Villa



400 m<sup>2</sup>



3



3



250.000,00 €

## ALBUFEIRA

Morada em Banda | Townhouse



110 m<sup>2</sup>



2



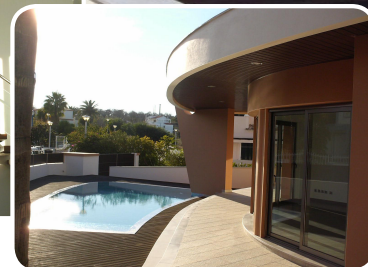
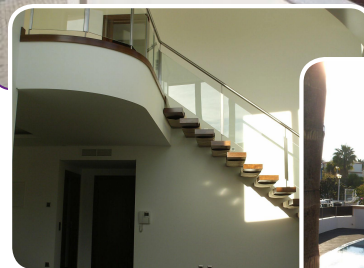
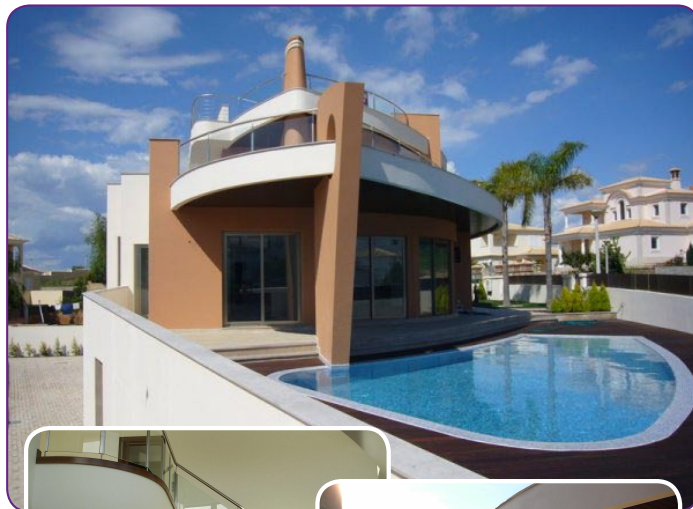
3



270.000,00 €

## ALBUFEIRA

Morada | Villa



690 m<sup>2</sup>



350 m<sup>2</sup>



4



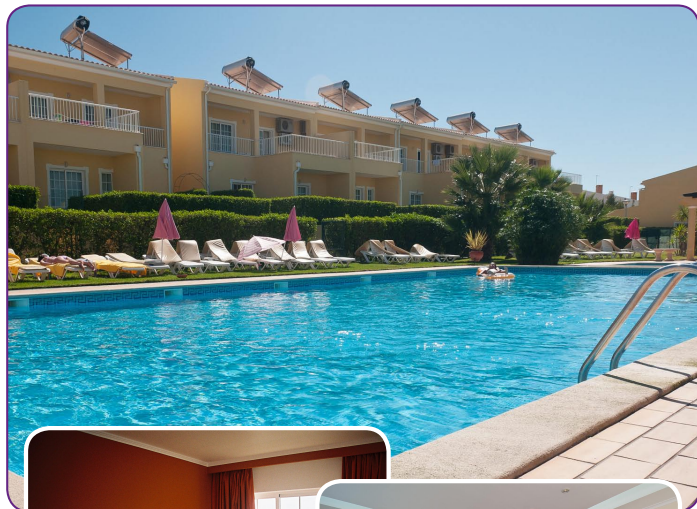
4



585.000,00 €

# PÊRA

Moradias em Banda e Apartamentos  
*Townhouses and Apartments*



71 m<sup>2</sup>  
162 m<sup>2</sup>



2  
3



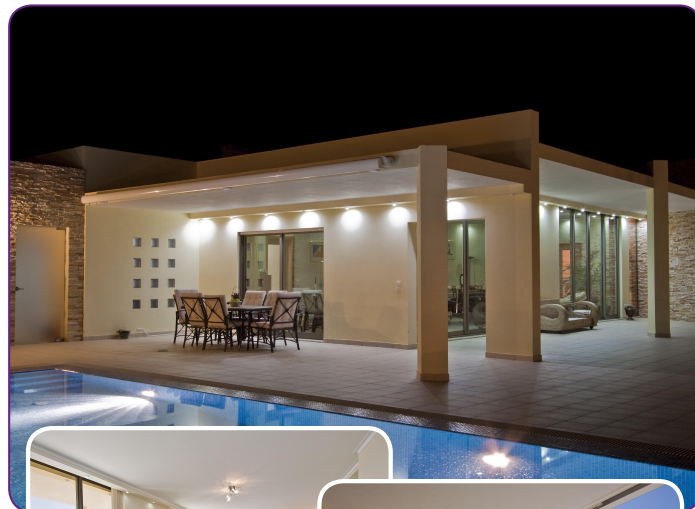
1  
3



158.000,00 €  
290.000,00 €

Morada | Villa

# LAGOA



1.950 m<sup>2</sup>



530 m<sup>2</sup>



4



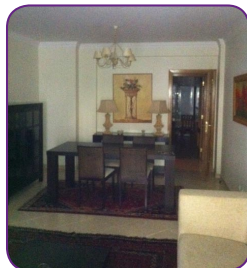
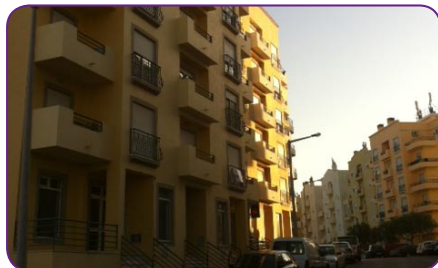
6



1.500.000,00 €

# FARO

Apartamento | Apartment



110 m<sup>2</sup>



3



2



140.000,00 €

# FARO

Apartamento | Apartment



68 m<sup>2</sup>  
80 m<sup>2</sup>



1  
2



1  
2



120.000,00 €  
135.000,00 €

Morada | Villa

# FARO



530 m<sup>2</sup>



360 m<sup>2</sup>



4



4



475.000,00 €

Morada | Villa

# FARO



200 m<sup>2</sup>



4

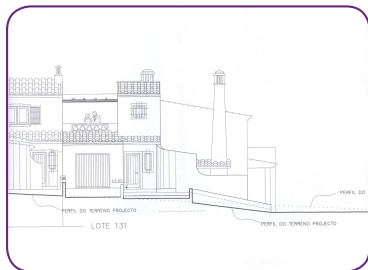


5



270.000,00 €

## Lotes | Plots



### QUARTEIRA

P <sup>2</sup>	a <sup>2</sup>	€
220 m2	200 m2	60.000,00 €
380 m2	250 m2	70.000,00 €
788 m2	552 m2	130.000,00 €
1.420 m2	852 m2	160.000,00 €

### VILAMOURA

P <sup>2</sup>	a <sup>2</sup>	€
775 m2	265 m2	275.000,00 €
902 m2	290 m2	300.000,00 €
610 m2	250 m2	338.000,00 €
1.073 m2	300 m2	465.000,00 €
4.951 m2	500 m2	950.000,00 €
6.859 m2	600 m2	1.400.000,00 €



### VALE DO LOBO

P <sup>2</sup>	a <sup>2</sup>	€
976 m2	209,6 m2	205.000,00 €
486 m2	249,6 m2	245.000,00 €
1.000 m2	600 m2	900.000,00 €
1.050 m2	610 m2	1.050.000,00 €



## QUINTA DO LAGO



2.320 m<sup>2</sup> 460 m<sup>2</sup>  
2.230 m<sup>2</sup> 397 m<sup>2</sup>

## ALMANGIL



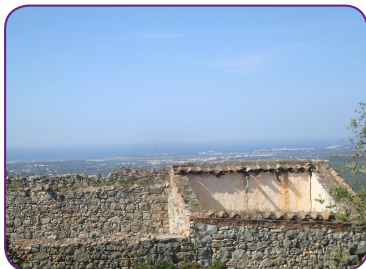
12.000 m<sup>2</sup> 300 m<sup>2</sup> 450.000,00 €



## PARRAGIL



930 m<sup>2</sup> 300 m<sup>2</sup> 85.000,00 €



## LOULÉ



537 m<sup>2</sup> 350 m<sup>2</sup> 160.000,00 €



## QUINTA DO LAGO

Centro Comercial Buganvília Plaza,  
Loja E, 8135-013 Almancil  
tel +351 289 358 828  
fax +351 289 358 939

## VILAMOURA

Edifício Vilamarina, Loja 18  
Marina de Vilamoura  
8125-403 Vilamoura  
tel +351 289 388 515

## FARO

Rua do Bocage, nº 33  
8000-294 Faro  
tel +351 916 124 557

